



DR. PABLO O. TORRE
MEMORIAL HOSPITAL

RIVERSIDE MEDICAL CENTER, INC.



METRO PACIFIC HEALTH
THE HEART OF FILIPINO HEALTHCARE

DEPARTMENT: Ancillary Division		POLICY NUMBER: DPOTMH-HEMO-MPP-P013-(01)	
TITLE/DESCRIPTION: CONTINGENCY PLAN IN CASE OF ACCIDENTS/EQUIPMENT BREAKDOWN IN HDU			
EFFECTIVE DATE: May 30, 2025	REVISION DUE: May 29, 2028	REPLACES NUMBER: QP-12	NO. OF PAGES: 1 of 11
APPLIES TO: Hemodialysis Unit, Engineering Department		POLICY TYPE: Multi Disciplinary	

PURPOSE:

1. To enable the Hemodialysis Unit to continue the delivery of its services even in times of emergencies.
2. To outline the necessary measures and precautions to take in event of an emergency or natural disaster.

DEFINITIONS:

POWER FAILURE – Is the unplanned disruption or cessation of the normal electrical power supply, which may impact patient care, safety systems, and the operational functionality of the healthcare facility.

MANUAL BLOOD PUMPING – a technique where a person, rather than a machine, manually pushes or pulls a syringe to circulate blood through the extracorporeal circuit (the tubing and filter outside the body) during hemodialysis.

RESPONSIBILITY:

Maintenance Personnel, Hemodialysis Personnel, Hemodialysis Supervisor, Biomed Supervisor

POLICY:

1. The Hemodialysis Unit shall have a written procedure on what to do in case of fire and other natural calamities.
2. The Hemodialysis Unit shall have a step-by-step procedure with regards to the Dialysis Machine in case of the fire and/or other natural calamities, including power failure.





DEPARTMENT: Ancillary Division		POLICY NUMBER: DPOTMH-HEMO-MPP-P013--(01)	
TITLE/DESCRIPTION: CONTINGENCY PLAN IN CASE OF ACCIDENTS/EQUIPMENT BREAKDOWN IN HDU			
EFFECTIVE DATE: May 30, 2025	REVISION DUE: May 29, 2028	REPLACES NUMBER: QP-12	NO. OF PAGES: 2 of 11
APPLIES TO: Hemodialysis Unit, Engineering Department		POLICY TYPE: Multi Disciplinary	

PROCEDURE:

1. In case of power failure (manual blood pumping)

- 1.1. The Hemodialysis Nurse or technician sets foam detector to bypass and resets arm-tubing clamp. In the event of continuous power failure, the Hemodialysis nurse or technician performs manual pumping of blood. Manual pumping is done as follows:
 - 1.1.1. The Hemodialysis Nurse or technician opens the blood pump cover.
 - 1.1.2. The Hemodialysis Nurse or technician raises the blood pump handle.
 - 1.1.3. The Hemodialysis Nurse or technician rotates the blood pump clockwise.
 - 1.1.4. If increased resistance is encountered during the manual blood pumping, hemodialysis nurse or technician temporarily stops cranking and checks for kinks, clots or obstructions to flow. Hemodialysis Personnel makes corrective action and continues cranking.
- 1.2. If the power is not restored within 15-20 seconds, Hemodialysis Personnel notifies the Maintenance Department.
- 1.3. If power is not restored within 5 minutes, hemodialysis renal nurse or technician terminates the dialysis.
- 1.4. Once the power is restored:
 - 1.4.1. The hemodialysis nurse or technician replaces the blood pump handle and cover.
 - 1.4.2. The hemodialysis nurse or technician resets the alarm guards (arterial, venous, TMP, air detector).

2. In case of equipment breakdown

- 2.1. The Hemodialysis Technician Personnel and/or Maintenance and Engineering Personnel immediately informs the Engineer-in-Charged of the machine provider.
- 2.2. The Hemodialysis Technician prepares the back-up machines in case the repair will not be done immediately.
- 2.3. The Hemodialysis Supervisor immediately contacts the other Hemodialysis areas for the availability of schedule, in cases of more than one (1) machine breakdown and back-up machine is already used.





DR. PABLO O. TORRE
MEMORIAL HOSPITAL

RIVERSIDE MEDICAL CENTER, INC.



METRO PACIFIC HEALTH
THE HEART OF FILIPINO HEALTHCARE

DEPARTMENT: Ancillary Division		POLICY NUMBER: DPOTMH-HEMO-MPP-P013-(01)	
TITLE/DESCRIPTION: CONTINGENCY PLAN IN CASE OF ACCIDENTS/EQUIPMENT BREAKDOWN IN HDU			
EFFECTIVE DATE: May 30, 2025	REVISION DUE: May 29, 2028	REPLACES NUMBER: QP-12	NO. OF PAGES: 3 of 11
APPLIES TO: Hemodialysis Unit, Engineering Department		POLICY TYPE: Multi Disciplinary	

3. In case of fire or other calamities

- 3.1. The Hemodialysis Personnel immediately contacts the Safety Officer/Security Supervisor and gives specific location of fire.
- 3.2. The Hemodialysis Personnel goes to the patient and:
 - 3.2.1. Turn of blood pump off.
 - 3.2.2. Using hemostat, clamps both arterial and venous AV Fistula line together near the patient.
 - 3.2.3. Clamps the arterial and venous bloodlines using the hemostat of a built-in clamp.
 - 3.2.4. Disconnects bloodlines and dialyzer from machine.
 - 3.2.5. Escorts patient out of the building through the nearest exit while ensuring that the fistula needles are intact.
- 3.3. When additional medical support is available, Hemodialysis Renal Nurse or Technician unhook needles, disconnects and addresses AV shunt or other access.






DR. PABLO O. TORRE
MEMORIAL HOSPITAL

RIVERSIDE MEDICAL CENTER, INC.



METRO PACIFIC HEALTH
THE HEART OF FILIPINO HEALTHCARE

DEPARTMENT: Ancillary Division		POLICY NUMBER: DPOTMH-HEMO-MPP-P013-(01)	
TITLE/DESCRIPTION: CONTINGENCY PLAN IN CASE OF ACCIDENTS/EQUIPMENT BREAKDOWN IN HDU			
EFFECTIVE DATE: May 30, 2025	REVISION DUE: May 29, 2028	REPLACES NUMBER: QP-12	NO. OF PAGES: 4 of 11
APPLIES TO: Hemodialysis Unit, Engineering Department		POLICY TYPE: Multi Disciplinary	

WORK INSTRUCTION:	
KEY TASKS	PERSONNEL RESPONSIBLE
In case of power failure (manual blood pumping)	
1. Sets foam detector to bypass and resets arm-tubing clam.	Hemodialysis Renal Nurse/Technician
2. Performs manual pumping of blood.	
3. Replaces the blood pump handle and cover.	
4. Resets the alarm guards (arterial, venous, TMP, air detector).	
5. Terminates the dialysis If power is not restored within 5 minutes.	
6. Notifies the Maintenance Department.	Hemodialysis Personnel
	



DR. PABLO O. TORRE
MEMORIAL HOSPITAL

RIVERSIDE MEDICAL CENTER, INC.



METRO PACIFIC HEALTH
THE HEART OF FILIPINO HEALTHCARE

DEPARTMENT: Ancillary Division		POLICY NUMBER: DPOTMH-HEMO-MPP-P013-(01)	
TITLE/DESCRIPTION: CONTINGENCY PLAN IN CASE OF ACCIDENTS/EQUIPMENT BREAKDOWN IN HDU			
EFFECTIVE DATE: May 30, 2025	REVISION DUE: May 29, 2028	REPLACES NUMBER: QP-12	NO. OF PAGES: 5 of 11
APPLIES TO: Hemodialysis Unit, Engineering Department		POLICY TYPE: Multi Disciplinary	

KEY TASKS	PERSONNEL RESPONSIBLE
In case of equipment breakdown	
1. Informs immediately the Engineer-in-Charged of the machine provider.	Hemodialysis Technician Personnel and/or Maintenance and Engineering Personnel
2. Prepares the back-up machines in case the repair will not be done immediately.	Hemodialysis Technician
3. Contacts the other Hemodialysis areas for the availability of schedule, in cases of more than one (1) machine breakdown and back-up machine is already used.	Hemodialysis Supervisor





DR. PABLO O. TORRE
MEMORIAL HOSPITAL

RIVERSIDE MEDICAL CENTER, INC.



METRO PACIFIC HEALTH
THE HEART OF FILIPINO HEALTHCARE

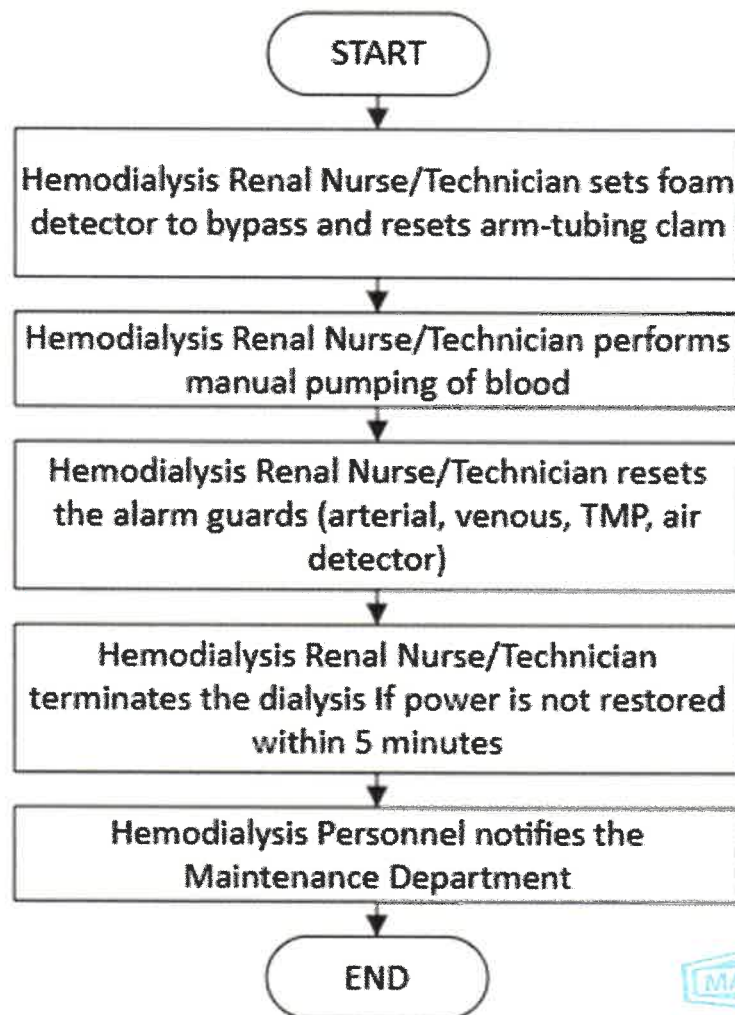
DEPARTMENT: Ancillary Division		POLICY NUMBER: DPOTMH-HEMO-MPP-P013-(01)	
TITLE/DESCRIPTION: CONTINGENCY PLAN IN CASE OF ACCIDENTS/EQUIPMENT BREAKDOWN IN HDU			
EFFECTIVE DATE: May 30, 2025	REVISION DUE: May 29, 2028	REPLACES NUMBER: QP-12	NO. OF PAGES: 6 of 11
APPLIES TO: Hemodialysis Unit, Engineering Department		POLICY TYPE: Multi Disciplinary	

KEY TASKS		PERSONNEL RESPONSIBLE
In case of fire or other calamities		
1. Contacts the Safety Officer/Security Supervisor and gives specific location of fire.	Hemodialysis Personnel	
2. Turn off blood pumps, clamp arterial and venous AV Fistula lines, disconnect bloodlines and dialyzer, and escort the patient out of the building, ensuring intact fistula needles.		
3. Unhook needles, disconnects and addresses AV shunt or other access.		
4. Assesses the patient to evacuation site.		
<div>MASTER COPY</div>		

DEPARTMENT: Ancillary Division		POLICY NUMBER: DPOTMH-HEMO-MPP-P013-(01)	
TITLE/DESCRIPTION: CONTINGENCY PLAN IN CASE OF ACCIDENTS/EQUIPMENT BREAKDOWN IN HDU			
EFFECTIVE DATE: May 30, 2025	REVISION DUE: May 29, 2028	REPLACES NUMBER: QP-12	NO. OF PAGES: 7 of 11
APPLIES TO: Hemodialysis Unit, Engineering Department		POLICY TYPE: Multi Disciplinary	

WORK FLOW:

In case of power failure (manual blood pumping)





DR. PABLO O. TORRE
MEMORIAL HOSPITAL

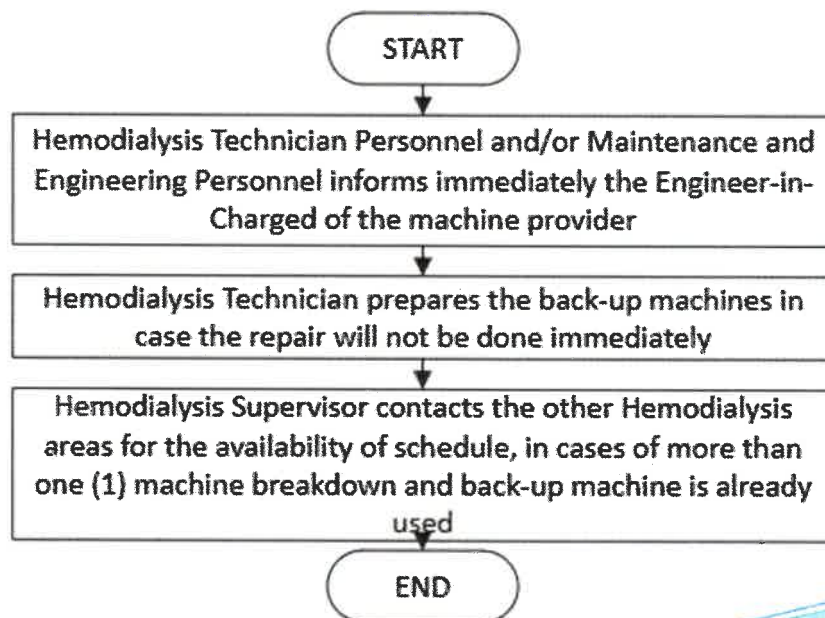
RIVERSIDE MEDICAL CENTER, INC.



METRO PACIFIC HEALTH
THE HEART OF FILIPINO HEALTHCARE

DEPARTMENT: Ancillary Division		POLICY NUMBER: DPOTMH-HEMO-MPP-P013-(01)	
TITLE/DESCRIPTION: CONTINGENCY PLAN IN CASE OF ACCIDENTS/EQUIPMENT BREAKDOWN IN HDU			
EFFECTIVE DATE: May 30, 2025	REVISION DUE: May 29, 2028	REPLACES NUMBER: QP-12	NO. OF PAGES: 8 of 11
APPLIES TO: Hemodialysis Unit, Engineering Department		POLICY TYPE: Multi Disciplinary	

In case of equipment breakdown



MASTER COPY



DR. PABLO O. TORRE
MEMORIAL HOSPITAL

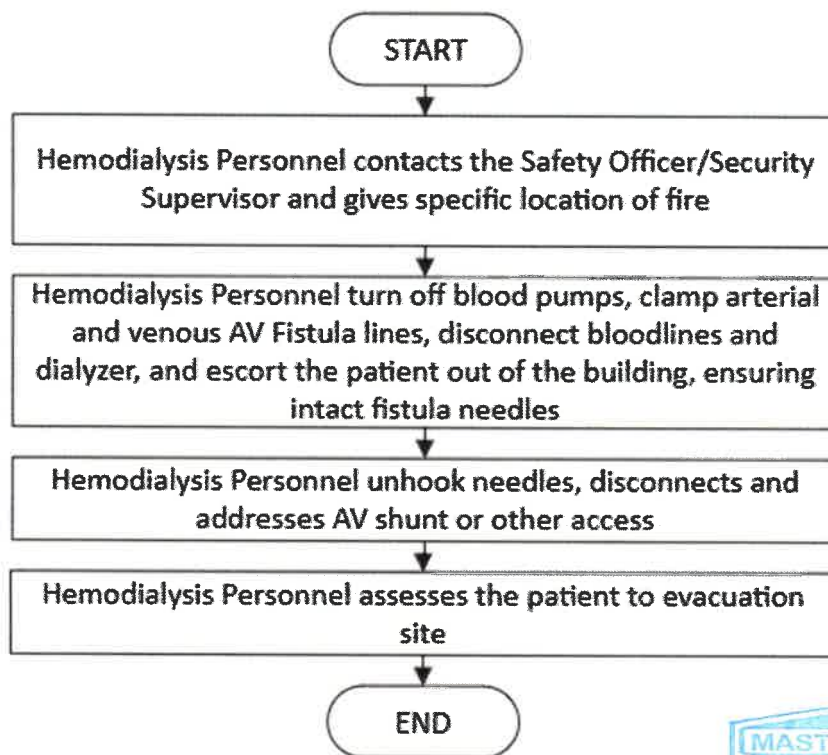
RIVERSIDE MEDICAL CENTER, INC.



METRO PACIFIC HEALTH
THE HEART OF FILIPINO HEALTHCARE

DEPARTMENT: Ancillary Division		POLICY NUMBER: DPOTMH-HEMO-MPP-P013-(01)	
TITLE/DESCRIPTION: CONTINGENCY PLAN IN CASE OF ACCIDENTS/EQUIPMENT BREAKDOWN IN HDU			
EFFECTIVE DATE: May 30, 2025	REVISION DUE: May 29, 2028	REPLACES NUMBER: QP-12	NO. OF PAGES: 9 of 11
APPLIES TO: Hemodialysis Unit, Engineering Department		POLICY TYPE: Multi Disciplinary	

In case of fire or other calamities





DR. PABLO O. TORRE
MEMORIAL HOSPITAL

RIVERSIDE MEDICAL CENTER, INC.



METRO PACIFIC HEALTH
THE HEART OF FILIPINO HEALTHCARE

DEPARTMENT: Ancillary Division		POLICY NUMBER: DPOTMH-HEMO-MPP-P013-(01)	
TITLE/DESCRIPTION: CONTINGENCY PLAN IN CASE OF ACCIDENTS/EQUIPMENT BREAKDOWN IN HDU			
EFFECTIVE DATE: May 30, 2025	REVISION DUE: May 29, 2028	REPLACES NUMBER: QP-12	NO. OF PAGES: 10 of 11
APPLIES TO: Hemodialysis Unit, Engineering Department		POLICY TYPE: Multi Disciplinary	

FORMS: N/A
EQUIPMENT: N/A
REFERENCES: <ol style="list-style-type: none">1. Hemo-QP-122. Hemo-QP-243. Hemo-QP-26





DR. PABLO O. TORRE
MEMORIAL HOSPITAL

RIVERSIDE MEDICAL CENTER, INC.



METRO PACIFIC HEALTH
THE HEART OF FILIPINO HEALTHCARE

DEPARTMENT: Ancillary Division		POLICY NUMBER: DPOTMH-HEMO-MPP-P013-(01)	
TITLE/DESCRIPTION: CONTINGENCY PLAN IN CASE OF ACCIDENTS/EQUIPMENT BREAKDOWN IN HDU			
EFFECTIVE DATE: May 30, 2025	REVISION DUE: May 29, 2028	REPLACES NUMBER: QP-12	NO. OF PAGES: 11 of 11
APPLIES TO: Hemodialysis Unit, Engineering Department		POLICY TYPE: Multi Disciplinary	

Approvals:				
	Name/Title	Signature	Date	TQM Stamp
Prepared by:	JACKLYN ROSE B. PALMARES Hemodialysis Supervisor		5/2/25	
	MARIE FRANCIS GRACE S. HORTILLAS Hemodialysis Supervisor		5/5/25	
Reviewed by:	WENDY MAE D. GOMEZ Accreditation and Documentation Manager		5/5/25	
Approved By:	JOHAIRAH M. DIRAMPA Kidney Care Center Manager		5/7/25	
	HARVEY MYLES M. DIVINAGRACIA Assistant Manager-Facility Maintenance		5/8/25	
	JOJIE G. DELIMA Safety and Pollution Control		5/24/25	
	LEO MANUEL D. TUMANENG, MD Kidney Care Center Director		5/25/25	
	MARIA REMEDIOS R. TOMAS, MD Hemodialysis Unit Head		5/24/25	
	ROSARIO D. ABARING Ancillary Division Head		5/25/25	
	MA. ANTONIA S. GENSOLI, MD VP/Chief Medical Officer		5/25/25	
Final Approved By:	GENESIS GOLDI D. GOLINGAN President and Chief Executive Officer		5/14/25	

